



THE MARATHON STANDARD

Every Marathon home is built around five core features that set us apart. What others charge as upgrades, we build as standard.

TAPE & TEXTURE THROUGHOUT



Every wall finished with a tape and textured surface — the same as a site-built home. No vinyl panels. No visible seams.

- Clean, high-end appearance
- Allows for true interior customization
- Easy to maintain and repair

**Excludes small closets*

2X4 INTERIOR WALLS



Every interior wall framed with 2x4 studs — the same construction used in site-built homes. Most manufacturers use 2x3s to cut costs. We use 2x4s because it's the right way to build.

- Longer lifespan and higher resale value
- Stronger structure during transport and setup
- Reduced noise
- Better thermal performance = lower utility bills

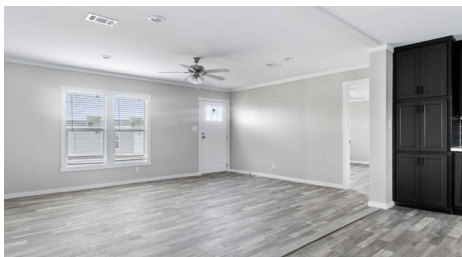
GALVALUME METAL ROOF



Every Marathon home comes with a Galvalume metal roof — not composite shingles. Built to handle Texas heat, storms, and everything in between.

- Longer lifespan than shingles
- Adds curb appeal and strength
- Lower maintenance, higher durability
- Reflects heat for better energy efficiency

OVERHEAD AC DUCTS



Heating and cooling runs through the ceiling — not under the floor. Cold air naturally sinks, making overhead ducts ideal for warm climates like Texas.

- More even airflow = better comfort
- Easier maintenance
- No lost floor space
- Fewer long-term issues

SMART PANEL SIDING (55-YEAR WARRANTY)



Every Marathon home is wrapped in Smart Panel siding — engineered for extreme durability and backed by a 55-year warranty.

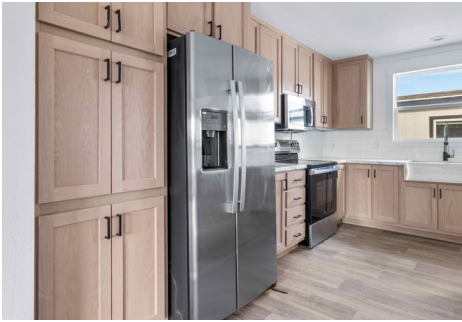
- Superior impact resistance
- Built for Texas weather
- Resists moisture, pests, and decay
- Looks like real wood, without the upkeep



THE MARATHON OPTIONS

Make it yours.
Customize your Marathon home with the finishes and features that fit your lifestyle.

22' SIDE-BY-SIDE REFRIGERATOR



A full-size, side-by-side fridge that gives you the storage and accessibility of a traditional kitchen — not the compact units you'll find in most manufactured homes.

TILE PANEL SHOWER



Upgrade from standard shower surrounds to sleek tile panel walls — a clean, modern look that's easy to maintain and built to last.

LUXURY VINYL TILE (LVT) FLOORING



Step up from standard flooring to hand-laid luxury vinyl plank — the look and feel of hardwood with the durability manufactured homes demand. Waterproof, scratch-resistant, and built for everyday life.

GLAMOUR BATH



Turn your primary bathroom into a retreat. The Glamour Bath package adds a freestanding floating tub for a spa-inspired look that elevates the entire space.

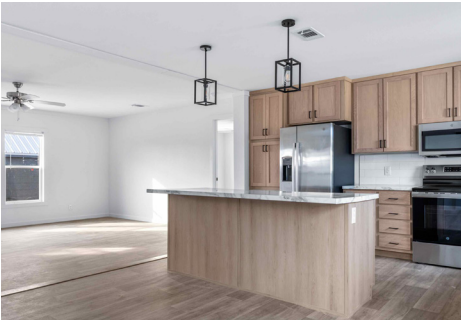
Reach out to your sales representative for a full list of Marathon's options.



THE MARATHON OPTIONS

Make it yours.
Customize your Marathon home with the finishes and features that fit your lifestyle.

FARMHOUSE PENDANT LIGHTS



Add pendant lighting in your kitchen or dining area. A small change that makes a big difference in how your home looks and feels.

CEDAR SHUTTERS



Real cedar shutters that add warmth and curb appeal to the exterior. A timeless detail that sets your home apart from the street.

SLIDING GLASS DOOR



Open up your living space with a sliding glass door — bringing in natural light and easy access to your porch, patio, or backyard.

BOX COLUMNS & WAINSCOT



Frame your porch with box columns and wainscot for a finished, site-built look that adds structure and curb appeal from day one.

Reach out to your sales representative for a full list of Marathon's options.



THE MARATHON PALETTE

Need inspiration?
Browse some of our favorite design combinations — then make it your own.

PICTURED: THE LIBERTY (32563A)



Paint: Pure White | Countertops: Calacatta Marble | Cabinets: Moonlight Zen | Backsplash: Arctic White | Flooring: Lime Oak

PICTURED: THE RED RIVER (32563C)



Paint: Shoji White | Countertops: Calacatta Marble | Cabinets: Black | Backsplash: Architectural Gray | Flooring: Cuban Oak



THE MARATHON PALETTE

Need inspiration?
Browse some of our favorite design combinations — then make it your own.

PICTURED: THE TEMPLE (18763A)



Paint: Pure White | Countertops: White Ice Granite | Cabinets: Crescent White | Backsplash: Watercolor Storm | Flooring: Lime Oak

PICTURED: THE MAVERICK (32563B)



Paint: Shoji White | Countertops: Calacatta Marble | Cabinets: Ozark Grey | Backsplash: Arctic White | Flooring: Lime Oak



THE MARATHON PALETTE

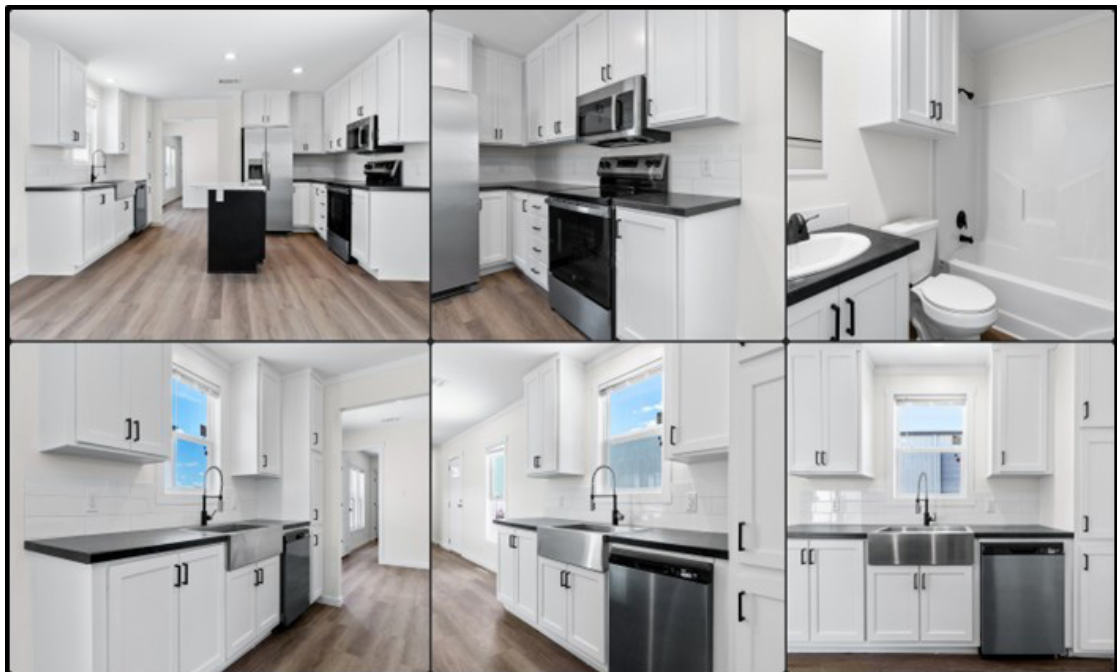
Need inspiration?
Browse some of our favorite design combinations — then make it your own.

PICTURED: THE MESQUITE (I6763A)



Paint: Heron Plume | Countertops: White Ice Granite | Cabinets: Crescent White | Backsplash: Watercolor Storm | Flooring: Wyndale LVT

PICTURED: THE PEARLAND (I6763C)



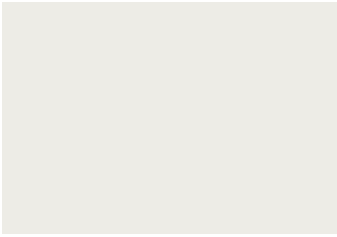
Paint: Alabaster | Countertops: Basalt Slate | Cabinets: Crescent White | Backsplash: Arctic White | Flooring: Wyndale LVT



FIXTURE OFFERINGS

2026

EXTERIOR PAINT



PURE WHITE
SW 7005



BALANCED BEIGE
SW 7037



CITYSCAPE
SW 7067



TRICORN BLACK
SW 6258

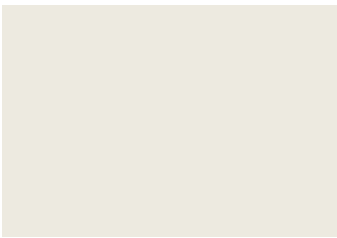


CASCADES
SW 7623



NAVAL
SW 6244

INTERIOR PAINT



ALABASTER
SW 7008



ACCESSIBLE BEIGE
SW 7036



AGREEABLE GRAY
SW 7029



IRON ORE
SW 7069



EVERGREEN FOG
SW 9130

CABINETS



CRESCENT WHITE



MOONLIGHT ZEN



OZARK GREY

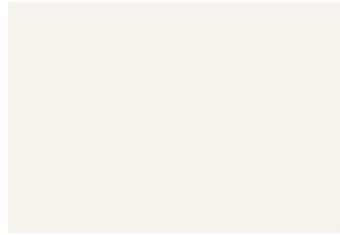


BLACK

TILE BACKSPASH



WATERCOLOR STORM



ARCTIC WHITE



ARCHITECTURAL GRAY

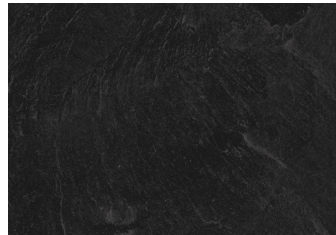
COUNTERTOPS



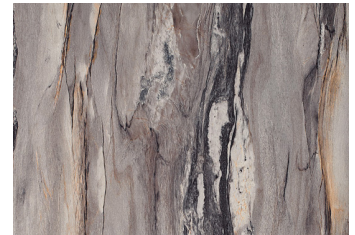
CALACATTA MARBLE



WHITE ICE GRANITE

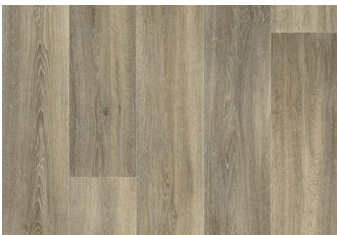


BASALT SLATE



DOLCE VITA

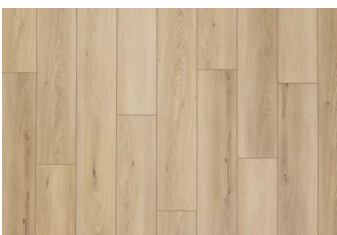
FLOOR COVERING



LINOLEUM
LIME OAK 069



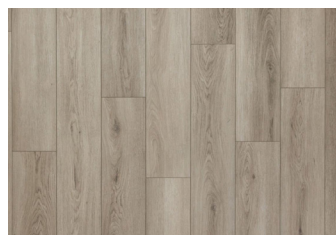
LINOLEUM
CUBAN OAK 289



LUXURY VINYL TILE ★
BARKLEY 838



LUXURY VINYL TILE ★
WYNDALE 848



LUXURY VINYL TILE ★
ELLIOTT 948

*NOTE: LVT FLOORING IS AVAILABLE AS AN UPGRADE OPTION